

MIT OpenCourseWare <http://ocw.mit.edu>

Electromagnetic Field Theory: A Problem Solving Approach

For any use or distribution of this textbook, please cite as follows:

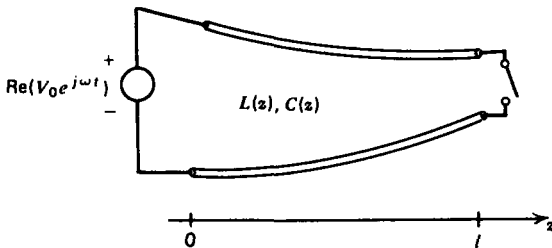
Markus Zahn, *Electromagnetic Field Theory: A Problem Solving Approach*. (Massachusetts Institute of Technology: MIT OpenCourseWare). <http://ocw.mit.edu> (accessed MM DD, YYYY).
License: Creative Commons Attribution-NonCommercial-Share Alike.

For more information about citing these materials or our Terms of Use, visit: <http://ocw.mit.edu/terms>.

PROBLEMS

Section 8-1

1. Find the inductance and capacitance per unit length and the characteristic impedance for the wire above plane and two wire line shown in Figure 8-3. (**Hint:** See Section 2-6-4c.)
2. The inductance and capacitance per unit length on a lossless transmission line is a weak function of z as the distance between electrodes changes slowly with z .



- (a) For this case write the transmission line equations as single equations in voltage and current.
- (b) Consider an exponential line, where

$$L(z) = L_0 e^{\alpha z}, \quad C(z) = C_0 e^{-\alpha z}$$

If the voltage and current vary sinusoidally with time as

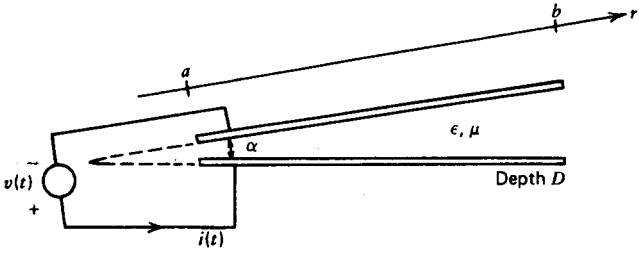
$$v(z, t) = \text{Re} [\hat{v}(z) e^{j\omega t}], \quad i(z, t) = \text{Re} [\hat{i}(z) e^{j\omega t}]$$

find the general form of solution for the spatial distributions of $\hat{v}(z)$ and $\hat{i}(z)$.

- (c) The transmission line is excited by a voltage source $V_0 \cos \omega t$ at $z = 0$. What are the voltage and current distributions if the line is short or open circuited at $z = l$?
- (d) For what range of frequency do the waves strictly decay with distance? What is the cut-off frequency for wave propagation?
- (e) What are the resonant frequencies of the short circuited line?
- (f) What condition determines the resonant frequencies of the open circuited line.

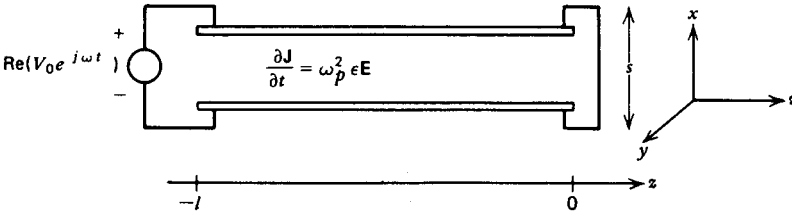
3. Two conductors of length l extending over the radial distance $a \leq r \leq b$ are at a constant angle α apart.

- (a) What are the electric and magnetic fields in terms of the voltage and current?
- (b) Find the inductance and capacitance per unit length. What is the characteristic impedance?



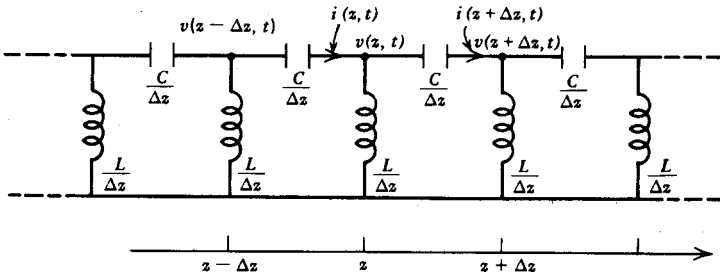
4. A parallel plate transmission line is filled with a conducting plasma with constitutive law

$$\frac{\partial \mathbf{J}}{\partial t} = \omega_p^2 \epsilon \mathbf{E}$$



- (a) How are the electric and magnetic fields related?
- (b) What are the transmission line equations for the voltage and current?
- (c) For sinusoidal signals of the form $e^{j(\omega t - kz)}$, how are ω and k related? Over what frequency range do we have propagation or decay?
- (d) The transmission line is short circuited at $z = 0$ and excited by a voltage source $V_0 \cos \omega t$ at $z = -l$. What are the voltage and current distributions?
- (e) What are the resonant frequencies of the system?

5. An unusual type of distributed system is formed by series capacitors and shunt inductors.

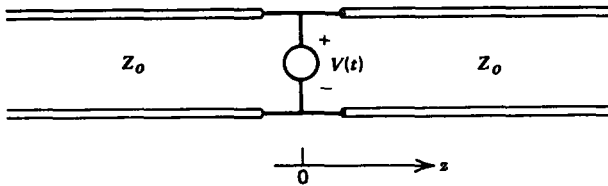


- (a) What are the governing partial differential equations relating the voltage and current?

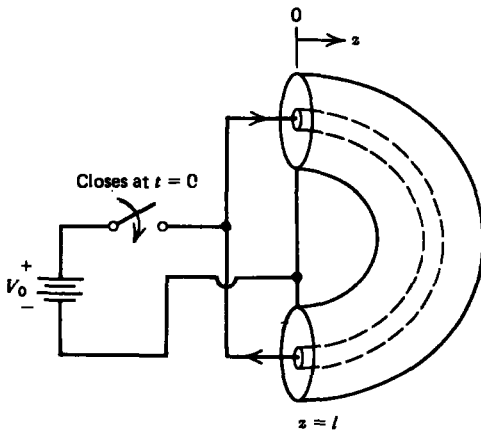
- (b) What is the dispersion relation between ω and k for signals of the form $e^{j(\omega t - kz)}$?
- (c) What are the group and phase velocities of the waves? Why are such systems called "backward wave"?
- (d) A voltage $V_0 \cos \omega t$ is applied at $z = -l$ with the $z = 0$ end short circuited. What are the voltage and current distributions along the line?
- (e) What are the resonant frequencies of the system?

Section 8-2

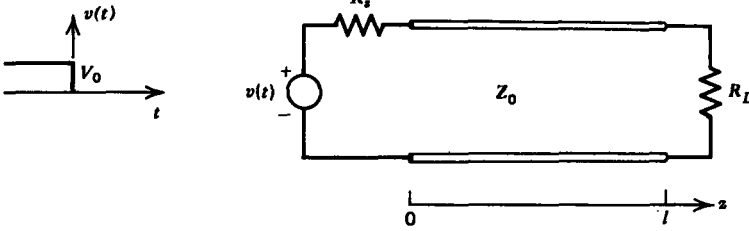
6. An infinitely long transmission line is excited at its center by a step voltage V_0 turned on at $t = 0$. The line is initially at rest.



- (a) Plot the voltage and current distributions at time T .
 - (b) At this time T the voltage is set to zero. Plot the voltage and current everywhere at time $2T$.
7. A transmission line of length l excited by a step voltage source has its ends connected together. Plot the voltage and current at $z = l/4$, $l/2$, and $3l/4$ as a function of time.

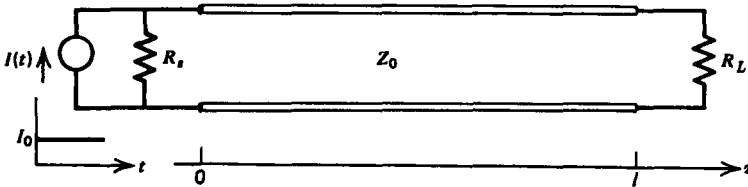


8. The dc steady state is reached for a transmission line loaded at $z = l$ with a resistor R_L and excited at $z = 0$ by a dc voltage V_0 applied through a source resistor R_s . The voltage source is suddenly set to zero at $t = 0$.
- (a) What is the initial voltage and current along the line?



(b) Find the voltage at the $z = l$ end as a function of time. (Hint: Use difference equations.)

9. A step current source turned on at $t = 0$ is connected to the $z = 0$ end of a transmission line in parallel with a source resistance R_s . A load resistor R_L is connected at $z = l$.



(a) What is the load voltage and current as a function of time? (Hint: Use a Thevenin equivalent network at $z = 0$ with the results of Section 8-2-3.)

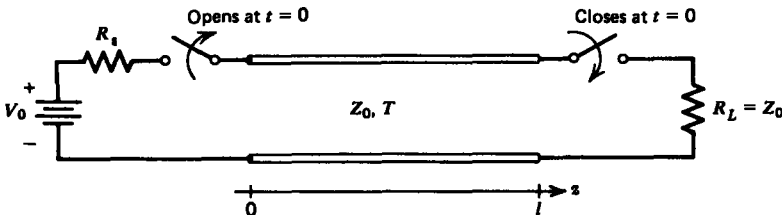
(b) With $R_s = \infty$ plot versus time the load voltage when $R_L = \infty$ and the load current when $R_L = 0$.

(c) If $R_s = \infty$ and $R_L = \infty$, solve for the load voltage in the quasi-static limit assuming the transmission line is a capacitor. Compare with (b).

(d) If R_s is finite but $R_L = 0$, what is the time dependence of the load current?

(e) Repeat (d) in the quasi-static limit where the transmission line behaves as an inductor. When are the results of (d) and (e) approximately equal?

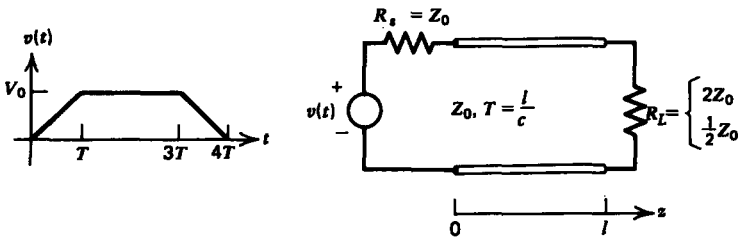
10. Switched transmission line systems with an initial dc voltage can be used to generate high voltage pulses of short time duration. The line shown is charged up to a dc voltage V_0 when at $t = 0$ the load switch is closed and the source switch is opened.



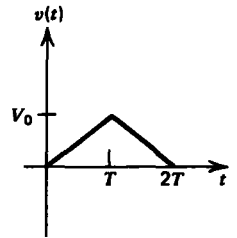
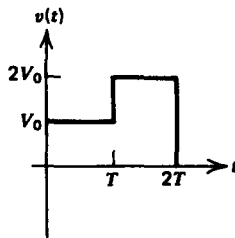
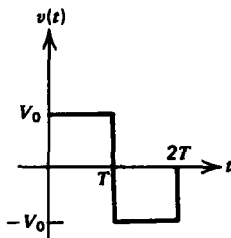
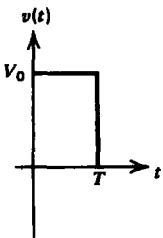
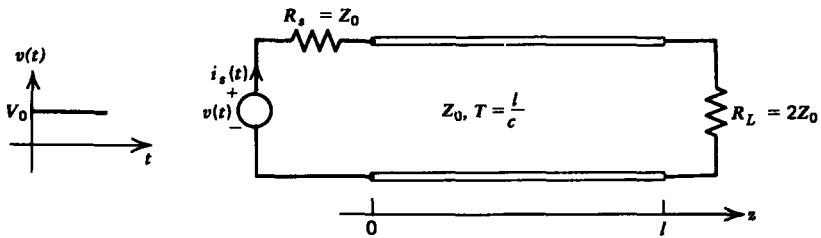
(a) What are the initial line voltage and current? What are V_+ and V_- ?

(b) Sketch the time dependence of the load voltage.

11. For the trapezoidal voltage excitation shown, plot versus time the current waveforms at $z = 0$ and $z = l$ for $R_L = 2Z_0$ and $R_s = \frac{1}{2}Z_0$.



12. A step voltage is applied to a loaded transmission line with $R_L = 2Z_0$ through a matching source resistor.



(b)

(c)

(a) Sketch the source current $i_s(t)$.

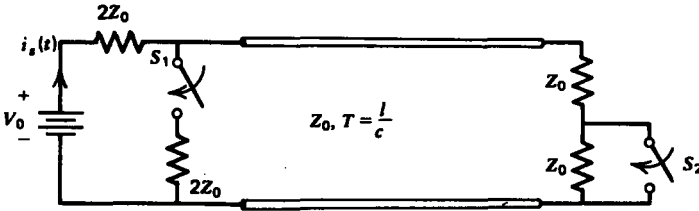
(b) Using superposition of delayed step voltages find the time dependence of $i_s(t)$ for the various pulse voltages shown.

(c) By integrating the appropriate solution of (b), find $i_s(t)$ if the applied voltage is the triangle wave shown.

13. A dc voltage has been applied for a long time to the transmission line circuit shown with switches S_1 and S_2 open

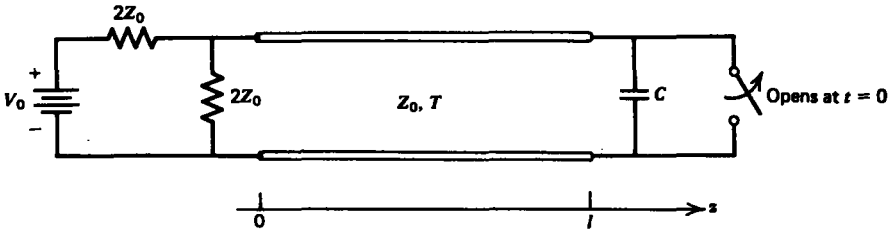
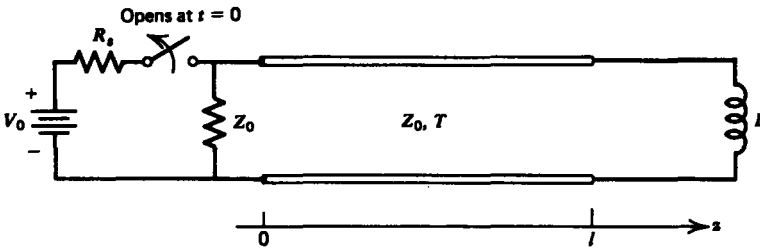
when at $t = 0$:

- (a) S_2 is suddenly closed with S_1 kept open;
- (b) S_1 is suddenly closed with S_2 kept open;
- (c) Both S_1 and S_2 are closed.



For each of these cases plot the source current $i_s(t)$ versus time.

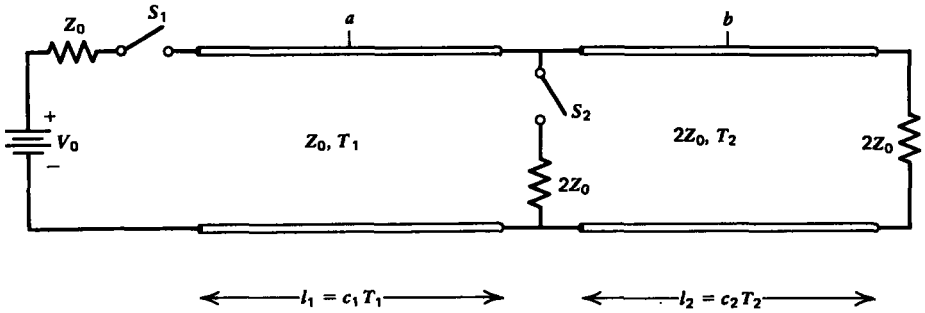
14. For each of the transmission line circuits shown, the switch opens at $t = 0$ after the dc voltage has been applied for a long time.



- (a) What are the transmission line voltages and currents right before the switches open? What are V_+ and V_- at $t = 0$?
- (b) Plot the voltage and current as a function of time at $z = l/2$.

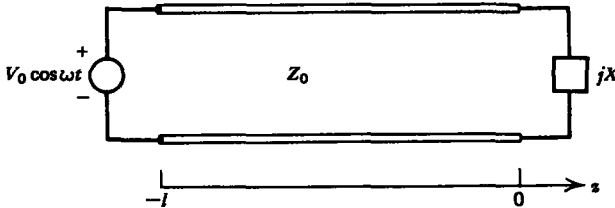
15. A transmission line is connected to another transmission line with double the characteristic impedance.

- (a) With switch S_2 open, switch S_1 is suddenly closed at $t = 0$. Plot the voltage and current as a function of time half-way down each line at points a and b .
- (b) Repeat (a) if S_2 is closed.



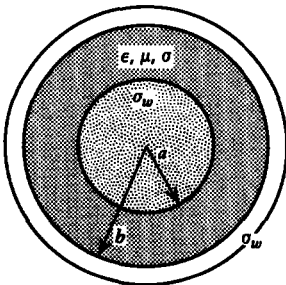
Section 8-3

16. A transmission line is excited by a voltage source $V_0 \cos \omega t$ at $z = -l$. The transmission line is loaded with a purely reactive load with impedance jX at $z = 0$.



- (a) Find the voltage and current distribution along the line.
- (b) Find an expression for the resonant frequencies of the system if the load is capacitive or inductive. What is the solution if $|X| = Z_0$?
- (c) Repeat (a) and (b) if the transmission line is excited by a current source $I_0 \cos \omega t$ at $z = -l$.

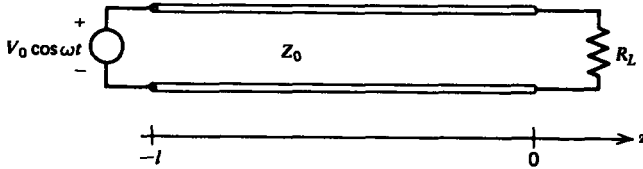
17. (a) Find the resistance and conductance per unit lengths for a coaxial cable whose dielectric has a small Ohmic conductivity σ and walls have a large conductivity σ_w . (Hint: The skin depth δ is much smaller than the radii or thickness of either conductor.)



- (b) What is the decay rate of the fields due to the losses?
- (c) If the dielectric is lossless ($\sigma = 0$) with a fixed value of

outer radius b , what value of inner radius a will minimize the decay rate? (**Hint:** $1 + 1/3.6 \approx \ln 3.6$.)

18. A transmission line of length l is loaded by a resistor R_L .



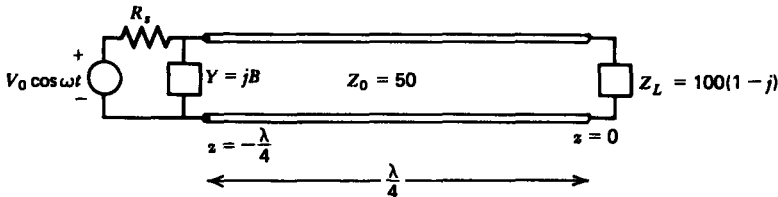
(a) Find the voltage and current distributions along the line.

(b) Reduce the solutions of (a) when the line is much shorter than a wavelength.

(c) Find the approximate equivalent circuits in the long wavelength limit ($kl \ll 1$) when R_L is very small ($R_L \ll Z_0$) and when it is very large ($R_L \gg Z_0$).

Section 8-4

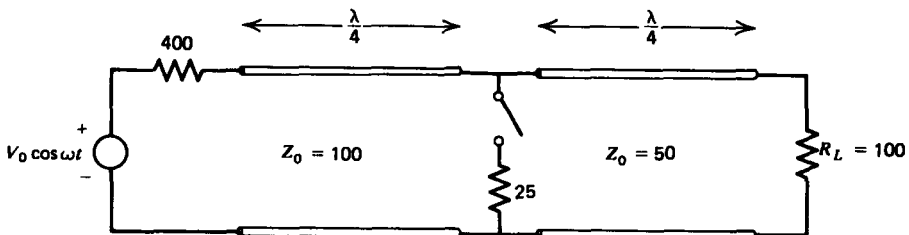
19. For the transmission line shown:



(a) Find the values of lumped reactive admittance $Y = jB$ and non-zero source resistance R_s that maximizes the power delivered by the source. (**Hint:** Do not use the Smith chart.)

(b) What is the time-average power dissipated in the load?

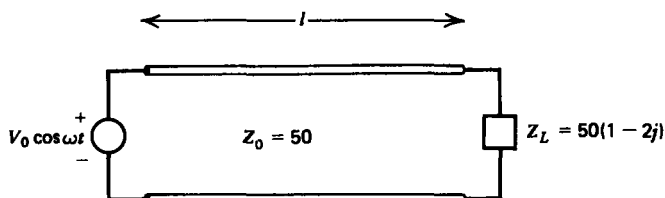
20. (a) Find the time-average power delivered by the source for the transmission line system shown when the switch is open or closed. (**Hint:** Do not use the Smith chart.)



(b) For each switch position, what is the time average power dissipated in the load resistor R_L ?

(c) For each switch position what is the VSWR on each line?

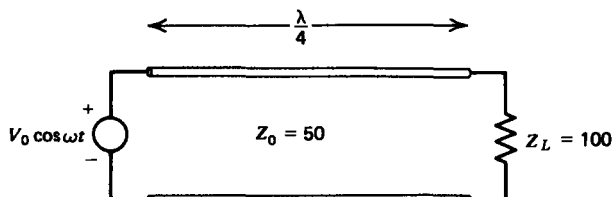
21. (a) Using the Smith chart find the source current delivered (magnitude and phase) for the transmission line system shown, for $l = \lambda/8, \lambda/4, 3\lambda/8,$ and $\lambda/2$.



(b) For each value of l , what are the time-average powers delivered by the source and dissipated in the load impedance Z_L ?

(c) What is the VSWR?

22. (a) Without using the Smith chart find the voltage and current distributions for the transmission line system shown.



(b) What is the VSWR?

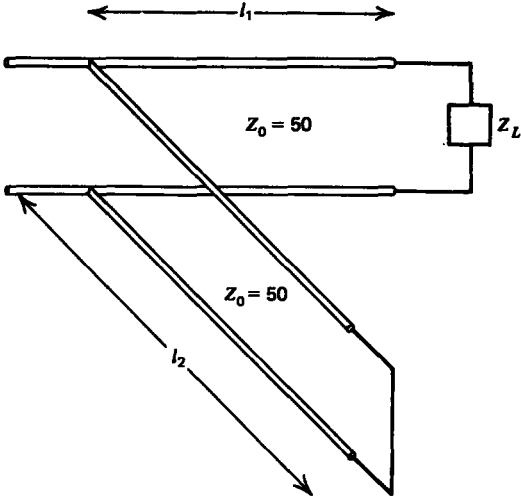
(c) At what positions are the voltages a maximum or a minimum? What is the voltage magnitude at these positions?

23. The VSWR on a 100-Ohm transmission line is 3. The distance between successive voltage minima is 50 cm while the distance from the load to the first minima is 20 cm. What are the reflection coefficient and load impedance?

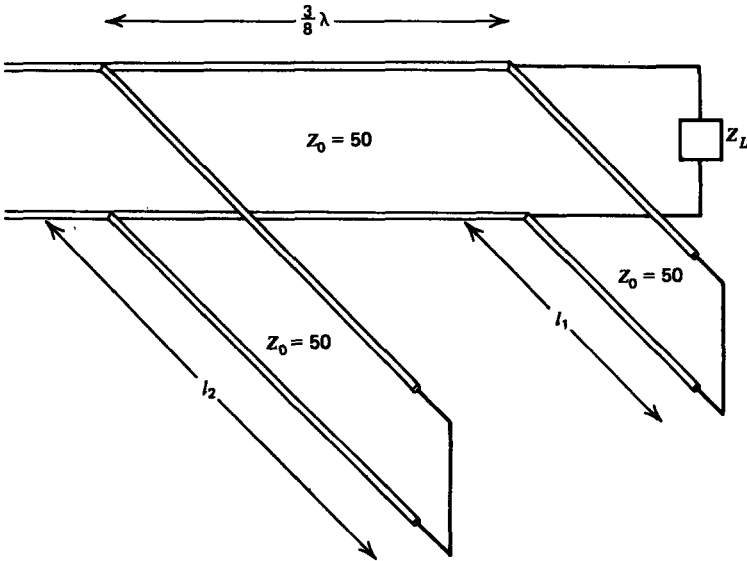
Section 8-5

24. For each of the following load impedances in the single-stub tuning transmission line system shown, find all values of the length of the line l_1 and stub length l_2 necessary to match the load to the line.

- (a) $Z_L = 100(1 - j)$ (c) $Z_L = 25(2 - j)$
 (b) $Z_L = 50(1 + 2j)$ (d) $Z_L = 25(1 + 2j)$

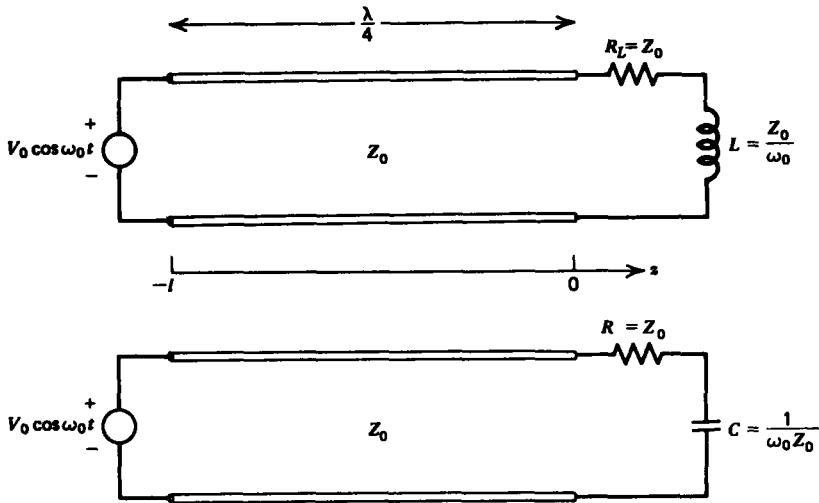


25. For each of the following load impedances in the double-stub tuning transmission line system shown, find stub lengths l_1 and l_2 to match the load to the line.



- (a) $Z_L = 100(1 - j)$
- (b) $Z_L = 50(1 + 2j)$
- (c) $Z_L = 25(2 - j)$
- (d) $Z_L = 25(1 + 2j)$

26. (a) Without using the Smith chart, find the input impedance Z_{in} at $z = -l = -\lambda/4$ for each of the loads shown.
 (b) What is the input current $i(z = -l, t)$ for each of the loads?



(c) The frequency of the source is doubled to $2\omega_0$. The line length l and loads L and C remain unchanged. Repeat (a) and (b).

(d) The frequency of the source is halved to $\frac{1}{2}\omega_0$. Repeat (a) and (b).

Section 8-6

27. A rectangular metal waveguide is filled with a plasma with constitutive law

$$\frac{\partial \mathbf{J}}{\partial t} = \omega_p^2 \epsilon \mathbf{E}$$

(a) Find the TE and TM solutions that satisfy the boundary conditions.

(b) What is the wavenumber k_z along the axis? What is the cut-off frequency?

(c) What are the phase and group velocities of the waves?

(d) What is the total electromagnetic power flowing down the waveguide for each of the modes?

(e) If the walls have a large but finite conductivity, what is the spatial decay rate for TE₁₀ propagating waves?

28. (a) Find the power dissipated in the walls of a waveguide with large but finite conductivity σ_w for the TM_{*m*n} modes (Hint: Use Equation (25).)

(b) What is the spatial decay rate for propagating waves?

29. (a) Find the equations of the electric and magnetic field lines in the xy plane for the TE and TM modes.

(b) Find the surface current field lines on each of the

waveguide surfaces for the TE_{mn} modes. **Hint:**

$$\int \tan x dx = -\ln \cos x$$

$$\int \cot x dx = \ln \sin x$$

(c) For all modes verify the conservation of charge relation on the $x = 0$ surface:

$$\nabla_{\Sigma} \cdot \mathbf{K} + \frac{\partial \sigma_f}{\partial t} = 0$$

30. (a) Find the first ten lowest cut-off frequencies if $a = b = 1$ cm in a free space waveguide.

(b) What are the necessary dimensions for a square free space waveguide to have a lowest cut-off frequency of 10^{10} , 10^8 , 10^6 , 10^4 , or 10^2 Hz?

31. A rectangular waveguide of height b and width a is short circuited by perfectly conducting planes at $z = 0$ and $z = l$.

(a) Find the general form of the TE and TM electric and magnetic fields. (**Hint:** Remember to consider waves traveling in the $\pm z$ directions.)

(b) What are the natural frequencies of this resonator?

(c) If the walls have a large conductivity σ_w find the total time-average power $\langle P_d \rangle$ dissipated in the TE_{101} mode.

(d) What is the total time-average electromagnetic energy $\langle W \rangle$ stored in the resonator?

(e) Find the Q of the resonator, defined as

$$Q = \frac{\omega_0 \langle W \rangle}{\langle P_d \rangle}$$

where ω_0 is the resonant frequency.

Section 8.7

32. (a) Find the critical frequency where the spatial decay rate α is zero for all the dielectric modes considered.

(b) Find approximate values of α , k_x , and k_z for a very thin dielectric, where $k_x d \ll 1$.

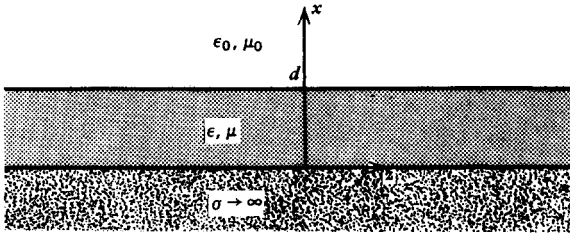
(c) For each of the solutions find the time-average power per unit length in each region.

(d) If the dielectric has a small Ohmic conductivity σ , what is the approximate attenuation rate of the fields.

33. A dielectric waveguide of thickness d is placed upon a perfect conductor.

(a) Which modes can propagate along the dielectric?

(b) For each of these modes, what are the surface current and charges on the conductor?



(c) Verify the conservation of charge relation:

$$\nabla_{\Sigma} \cdot \mathbf{K} + \frac{\partial \sigma_f}{\partial t} = 0$$

(d) If the conductor has a large but noninfinite Ohmic conductivity σ_w , what is the approximate power per unit area dissipated?

(e) What is the approximate attenuation rate of the fields?

